

blurb!

The regular newsletter of



Brookvale
Community Association

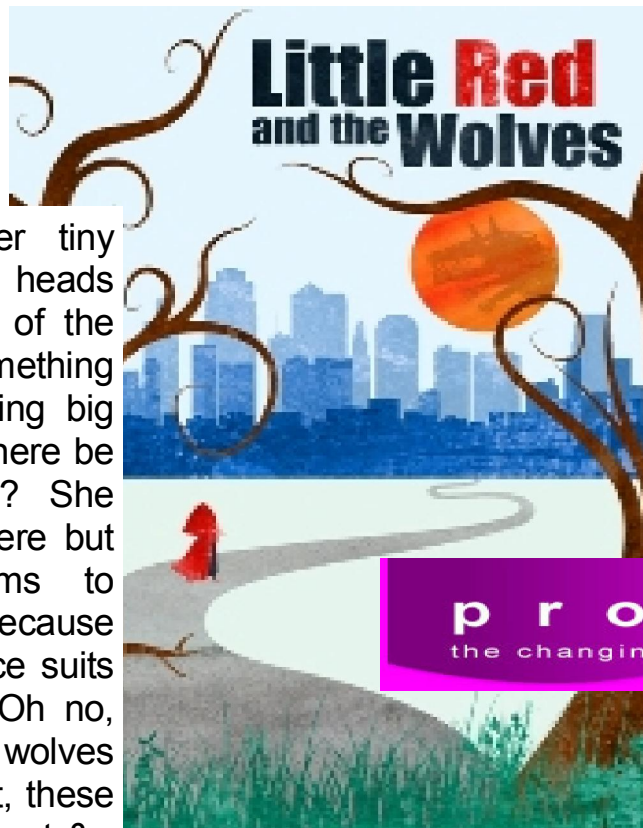
ISSUE 70
Dec 2015

In this issue: * Events * Bygones * Committee * Consultations * Lottery * Events * Clubs * Volunteers

Family Panto Brookvale Hall Sunday 3rd January 2:30pm

Once there
was a **girl...**
and a **wolf...**

Scarlett leaves her tiny village behind and heads for the bright lights of the big city, but something follows her, something big and hungry. Could there be wolves in the city? She sees them everywhere but no-one else seems to notice; perhaps because they wear three-piece suits and smoke cigars. Oh no, these are not the wolves you find in the forest, these are very, very different & very, very dangerous...



James doesn't understand why he's so tired. He goes to bed early every night, but each morning he wakes up feeling as if he has spent the night-time running through the streets. James grew up in the big city, but now longs to be in the forest. He doesn't know why, but when the moon is full he feels different...

proteus
the changing shape of theatre

Then, one day, **Scarlett and James meet**, and the wheels of fate are set in motion...

£8 & £5 Tickets from Pam : 01256 324313
info@brookvale.org.uk

Not suitable for under 5s



Lottery= Coffee= Morning= Panto= Coach Trip= Brookvale In Bloom= Brookvale Festival= Halloween Disco= Toddler Group= Community Garden= Green Week= Development Subcommittee= Parking Consultation= Community Plan= Parks Friends

For all the latest local news , events and information: www.brookvalecommunityassociation.hampshire.org.uk/

Continued on Page 2 >

< Continued from Page 1

Fastnet Diva



Amy Mossop

We are very happy to welcome Rainbows and Guides to Brookvale Village Hall on Fridays!

They have a very special Guide leader in Amy Mossop, who was selected to join the association's Fastnet Divas in the Fastnet Race. Their team of 16, ranging in age from 17 to 57, sailed in a 72ft Challenger yacht. The most diverse fleet of offshore racing yachts set sail from the Solent on August 16 in the Royal Ocean Racing Club's (RORC) biennial event.

After 3 days they rounded the Fastnet Rock off southern Ireland, and then headed back to the Isles of Scilly and Lands End. This was followed by the long haul from Penzance to the finish line at Plymouth, which Fastnet Divas completed, crossing the line at 5.47am on the Friday.

Amy said: "It was amazing. We may not have been fast, but we sailed in the spirit of Guiding and had fun throughout"

It just shows that having three kids keeps you as fit as joining a gym! Well done, Amy!

Library Service Consultation

Your 21stC Transformation & Modernisation needs by 16th Jan:

<http://www3.hants.gov.uk/library-strategy>

MARK SMITH
PLUMBING AND HEATING

All aspects of Plumbing & Heating work undertaken.

Greg Smith: 07766 111302
Email: greg.smith76@btinternet.com

BCA News

Our thanks to Pam for running our **Lottery** for 40 years.

Now she is planning to retire, we are looking for a replacement **Lottery Co-Ordinator**.

Please apply to us (details Page 4).
No volunteer means no more lottery!



Volunteers make someone's day, make a difference, help the less able, gain confidence and friends, get better jobs!

info@brookvale.org.uk

Hall Manager funding has been applied for and is awaiting a decision in the New Year.

Basingstoke Veteran's Club

A new group has started for those men and women who have served their country, regardless of rank or theatre. The idea is to provide a good place for veterans to come and relax, have a brew and a yarn. They will also point veterans towards various agencies for support and help. If you have served in The Royal Navy, Royal Fleet Auxiliary, Merchant Navy, Army and RAF, come along to the Winklebury Youth Project. Winklebury Way (by the football pitches) on Mon & Thurs 11 to 3 pm. To join, contact either of the co-organisers:

Mark Waller-Kevin Pearson-Paul Tidy-wells 07707 970642/07467 234246. Or email

mwaller49@hotmail.co.uk



Drink Drive Limit

The blood-alcohol limit is 80mg in every 100ml of blood.

In practical terms this means that someone drinking alcohol and driving could be 'over the limit' to drive after a relatively small amount of alcohol, even the morning after.

Even small amounts of alcohol affect your ability to drive and the only safe advice is to **avoid any alcohol if you are driving**:

- Arrange within your group of friends who's going to be the designated driver
- If you have no option but to drive, stick to zero alcohol beers, mocktails or standard soft drinks.
- Anyone caught over the legal alcohol limit when driving will be banned from driving for at least 12 months, and fined up to £5,000. You can also be given between three to 11 penalty driving points. Any car insurance in the future will cost a fortune!

Dog Fouler Fines

The Council's Community Safety Patrol Officers (CSPOs) promote good dog responsibility during patrolling the parks to remind dog owners to legally keep their pets under proper control with a collar and ID. You can be fined up to £5,000 if your dog does not wear an identification tag. From April 2016 all dogs over eight weeks old must be micro chipped and registered or owners risk prosecution and a £500 fine. Also the CSPOs will now issue on-the-spot fines of £50 to anyone seen not clearing up after their dog. Look out for a free microchipping event coming soon!

<p><i>Cocchiarella</i> Professional Tailoring</p>
<p>Ladies and Gents garments Alterations & Repairs 30 years experience. 7 day service</p>
<p>7 Deep Lane, Basingstoke Telephone 01256 468727</p>

Continued on Page 3 >

< Continued from Page 2

Friends Of Loddon Vale Parks



Early autumn is here, the ground has still got some warmth in it, The **Salvia Victoria** mixed which was planted early summer is well established now, This hardy perennial grows 50cm tall, with indigo blue/white flower spikes which flower early summer until first frosts if dead-headed. These are loved by butterflies and beneficial insects making these plants brilliant for biodiversity and look beautiful! Please can people keep a look out and report to 101 and us anyone seen removing plants from our public areas.



Also the Friends are planning Autumn/Spring bulb plantings per this plan agreed with the Council:

Loddon Vale Parks : Glebe Gardens - Spring Bulbs & planned plants



BCA welcome your Ideas and look forward to your offers of Volunteering to :

info@brookvale.org.uk

Development SubCtte

Met recently to progress local issues and review several papers regarding population and resources.

The affordable housing in Brook House was traded off elsewhere. Building on the May St Garages should provide 100% social housing in return for putting another estimated 28 cars onto Lower Brook Street.

Evidence papers are being submitted to the Planning Inspector regarding the local plan housing numbers and need.

With the customary higher number of units being demanded, this will aggravate the pressure on the existing infrastructure in urgent need of upgrading. Tinkering with the roundabouts is unlikely to make the big difference needed.

Your town MP requested more money for roads, but Water, Sewerage, Electric, Gas and Broadband will also need to be expanded. This is unlikely to be paid for by the Developers and so will continue to degrade Air, Water, Soil, Biodiversity with increasing pollution.

Greening

LIMITED OFFER – FREE HOME ENERGY SURVEY

Did you know that the average house in Brookvale will spend over £400 on heating this winter? Some of us will spend a lot more.

BCA have teamed up with Basingstoke Transition and the Basingstoke Energy Co-operative to offer free energy surveys of homes in Brookvale. We have been able to borrow a thermal camera which can detect the warmth leaking from your home. It can also find damp spots and drafts. The survey takes about 30 minutes; we take a couple of thermal images from inside and outside. After a brief chat we can then make recommendations on how your home can be made warmer. This saves money and makes your home an even better place to live.

This may be the best 30 minutes you spend this winter. Surveys are on a first come first served basis. So please do contact us so we can book you in.

This is a limited offer open to 5 homes only. To save money this winter contact Malcolm on 01256 364498.

SouthSea Community Day Trip

Good weather for our BCA 27th September SouthSea coach trip. We saw old Portsmouth Gunwharf Quays retail therapy, returning via Governor's Green to Clarence Pier for fish n chips & also a visit to SouthSea Castle.



Where was this?

< Continued from Page 3

Lottery**3Cs Lottery Winners:****Drawn at 3cs Coffee Mornings:****May 2015**

£50 724 Rochford Road
 £30 612 Rayleigh Road
 £20 188 George Street

Jun 2015

£50 403 Alexandra Rd
 £30 821 Solby's Road
 £20 121 Alexandra Rd

Jul 2015

£50 907 Southend Road
 £30 607 Rayleigh Road
 £20 91 Lower Brook St

Aug 2015

£50 865 Southend Road
 £30 344 Queen's Road
 £20 70 Lower Brook St

Costs **£12-10p per year**, including annual membership fee. Enquiries & help to: **Pam 01256-324313**

Upcoming Events**North Hants Mum Blog**

<http://northhants-mum.wordpress.com/about/>

Light Up A Life:**Sun 6th Dec 6pm****St Michaels Hospice grounds**

Precious memories of absent loved ones at Christmas.

Dedications to:

stmichaelshospice.org.uk/events

Fundraising Hotline:

01256 848848

3Cs Coffee Morning

At Brookvale Village Hall

Includes Councillor Surgery

First Monthly Saturday without a Bank Holiday:

Sat 6th Dec & Sat 9th Jan:

10am - 12 midday

Pam 01256-324313

Our Proteus Panto 2016!**Sunday 3rd January 2:30pm:**

Little Red and the Wolves

Tickets **£5 to £8** from

Pam 01256-324313

Bank transfer also accepted

Upcoming Events**Committee Meetings****Management Committee:**

Tues 8th Dec at 7.30pm

Tues 12th Jan at 7.30pm

info@brookvale.org.uk

Development SubCommittee:

Tues 24th Nov 2015 at 7:30pm

Tues 29th Mar 2016 at 7:30pm

Malcolm 01256-364498

Neighbourhood Watch

Queens Road:

Phil & Val 01256-421621

Brookvale Baby&Toddler Group

(Term time, Mondays:

10 – 11.30am)

£2 per session, per family

Xmas break starts end of term

Catherine 07957109970

info@brookvale.org.uk

National Childbirth Trust

Drop in each Friday:

10 – Midday.

Brookvale Village Hall

£2 per session, per family

0844 243 6041

info@basingstokenct.org.uk

Toddler Time

Tuesdays: Term time:

10.30 – 12noon

Essex Hall on Essex Road

Free of charge

Cil 07731-980824

Taoist Tai Chi

Tuesdays:

1.30-3pm

Brookvale Village Hall

Helen 01256-576167

Community Coach Trip

Sunday 26th June 2016:

Brookvale Village Hall

Depart Basingstoke 7:30am

**Leave Swanage 5pm**

* Sandy Beach

* Amusement Arcade

* Shopping Arcade

* Historic & Sculpture Trails

* Durlston Country Park

Tickets: £20-00 each (incl tip)

Joe 0741-207-4477

BCA Information

info@brookvale.org.uk

<http://www.brookvale.org.uk>

<http://www.facebook.com/pages/Brookvale-heart-of-Basingstoke/135744975619>

[Brookvale-heart-of-Basingstoke/135744975619](http://www.facebook.com/pages/Brookvale-heart-of-Basingstoke/135744975619)

[Basingstoke/135744975619](http://www.facebook.com/pages/Brookvale-heart-of-Basingstoke/135744975619)

Hall Booking Agent:

Cathy Williams

info@brookvale.org.uk

Brookvale Lottery:

Pam Mansfield,

Lottery Agent

(01256) 324313

pam.mansfield@brookvale.org.uk

Disability/Mobility issues:

Chris Hall (Parability Founder)

Vulnerable Person's Officer

07982 925709

enablement@parability.org

www.parability.org

<https://www.facebook.com/groups/390515707764879/?fref=ts>

[groups/390515707764879/?fref=ts](https://www.facebook.com/groups/390515707764879/?fref=ts)

Local Development issues:

Malcolm MacInnes,

Chair, Development-Sub Committee

(01256) 364498

calmacinnes@ntlworld.com

Your Ward Councillors are:

Councillor Michael Westbrook

07900 502995

cilr.michael.westbrook@basingstoke.gov.uk

Councillor Jack Cousens

07912 012746

Cllr.JackCousens@basingstoke.gov.uk

Your County Councillor is:

Councillor Criss Connor

(01256) 475629

criss.connor@hants.gov.uk

Your Town MP is:

Maria Miller MP

(020) 7219 5749

millerm@parliament.uk

Police Safer Neighbourhood Team:

PC Trevor Taylor:

101

Email:

Basingstoke.Town.Police@hampshire.pnn.police.uk

hampshire.pnn.police.uk

Web: [http://](http://www.hampshire.police.uk/internet/my-neighbourhood/basingstoke/basingstoke-town/basingstoke-centre/)

[www.hampshire.police.uk/](http://www.hampshire.police.uk/internet/my-neighbourhood/basingstoke/basingstoke-town/basingstoke-centre/)

[internet/my-neighbourhood/](http://www.hampshire.police.uk/internet/my-neighbourhood/basingstoke/basingstoke-town/basingstoke-centre/)

[basingstoke/basingstoke-](http://www.hampshire.police.uk/internet/my-neighbourhood/basingstoke/basingstoke-town/basingstoke-centre/)

[town/basingstoke-centre/](http://www.hampshire.police.uk/internet/my-neighbourhood/basingstoke/basingstoke-town/basingstoke-centre/)

Your Borough CSPO is:

Raymond Fraser

01256 845383

Raymond.Fraser@basingstoke.gov.uk

Brookvale Community Association

(BCA) registered charity 269386.

Hants., RG21 7RU (No Letterbox)

Non Profit run by unpaid volunteers